

SECOND QUARTER REPORT

Thirty-eight officers were killed in traffic-related incidents during the first half of 2021, compared to 24 over the same period last year, a 58% increase. Of the 38 traffic-related fatalities, 10 were automobile crashes involving a collision with another vehicle, five were single-vehicle crashes, and 19 were struck-by fatalities while on the side of the road. This year, four officers have been killed in motorcycle crashes, while during the same time period last year, one officer was killed.

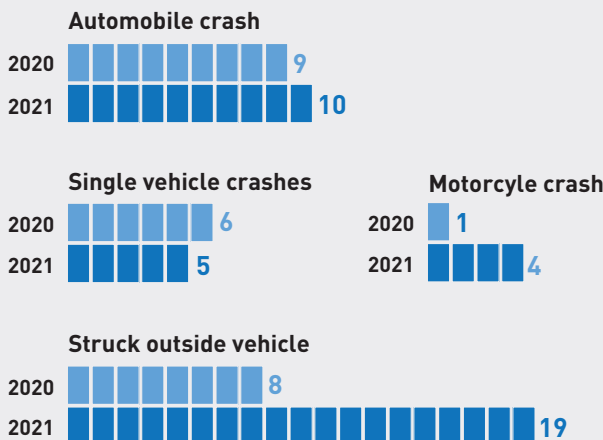
Struck-by incidents, where an officer was hit by a vehicle while outside of their patrol vehicle, were the leading circumstances of the traffic-

related fatalities. Many of these fatal struck-by crashes occurred while officers were investigating motor vehicle crashes or assisting motorists on the side of the road. Nineteen struck-by fatalities occurred during the first half of the year, versus eight during the same period last year, representing a 138% increase.

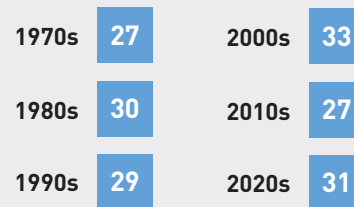
Compared to the average number of traffic-related fatalities per decade, 2021 is significantly higher than the past 10-year average (2010 – 2019). In the prior decade, 27 officers were killed on average in the first half of a given year.

TRAFFIC-RELATED FATALITIES THROUGH MID-YEAR

BY CIRCUMSTANCE



BY DECADE*



*Average per decade

Note: Mid-Year is from January 1 through June 30

OFFICERS FALLEN: TRAFFIC-RELATED



Police Officer
Melton Levi Gore

Horry County (SC) P.D.

EOW: JANUARY 12, 2021

Police Officer Gore stopped to remove a large garbage can from the roadway. Upon returning to his patrol vehicle, he was **struck and killed** by a passing motorist.



Trooper
Todd Hanneken

Illinois (IL) State Police

EOW: MARCH 25, 2021

Trooper Hanneken was killed in a **single-vehicle crash** when his patrol vehicle left the roadway and struck a light pole and tree.



Conservation Officer
Sarah Grell

Minnesota (MN) Department
of Natural Resources

EOW: MAY 24, 2021

Conservation Officer Grell was killed in an **automobile crash** when her department vehicle was struck by a tractor trailer.



Deputy Sheriff
Thomas Albanese

Los Angeles County (CA) S.O.

EOW: FEBRUARY 25, 2021

Deputy Sheriff Albanese was killed in a **motorcycle crash** when his patrol motorcycle collided with another vehicle.

