

Five Years of Law Enforcement Traffic-related Fatalities

An Analysis of Cases From 2017-2021



NATIONAL LAW ENFORCEMENT OFFICERS
SAFETY & WELLNESS

MEMORIAL | MUSEUM | OFFICER SAFETY & WELLNESS



**2022 MID-YEAR
PRELIMINARY
LAW ENFORCEMENT OFFICERS
FATALITIES REPORT**

www.nleomf.org



Looking at the Data

Law Enforcement Traffic-related Deaths

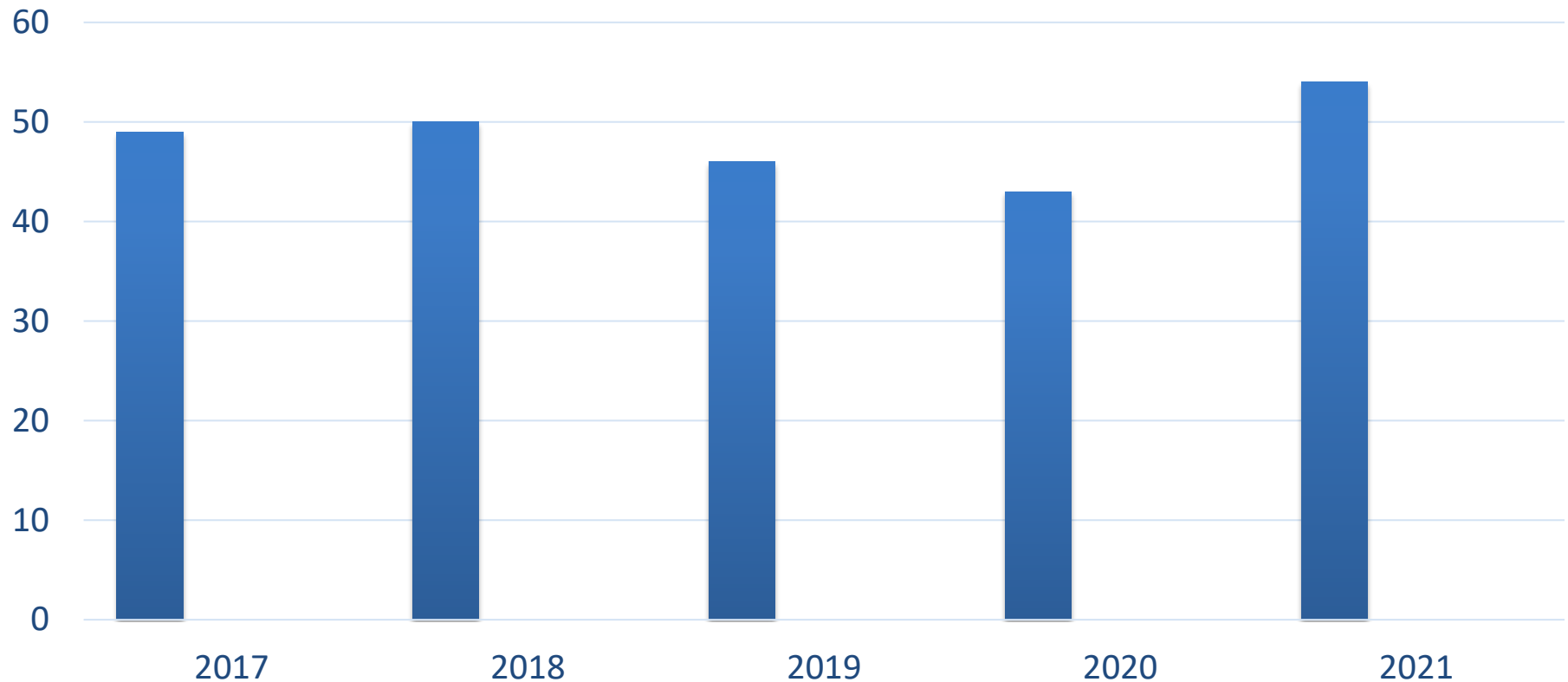
- From 2017-2021 a total of **242** Law Enforcement officers were killed in traffic crashes
 - **137** in auto crashes
 - **87** in struck-by crashes
 - **20** in motorcycle crashes





Total Traffic-related Deaths by Year

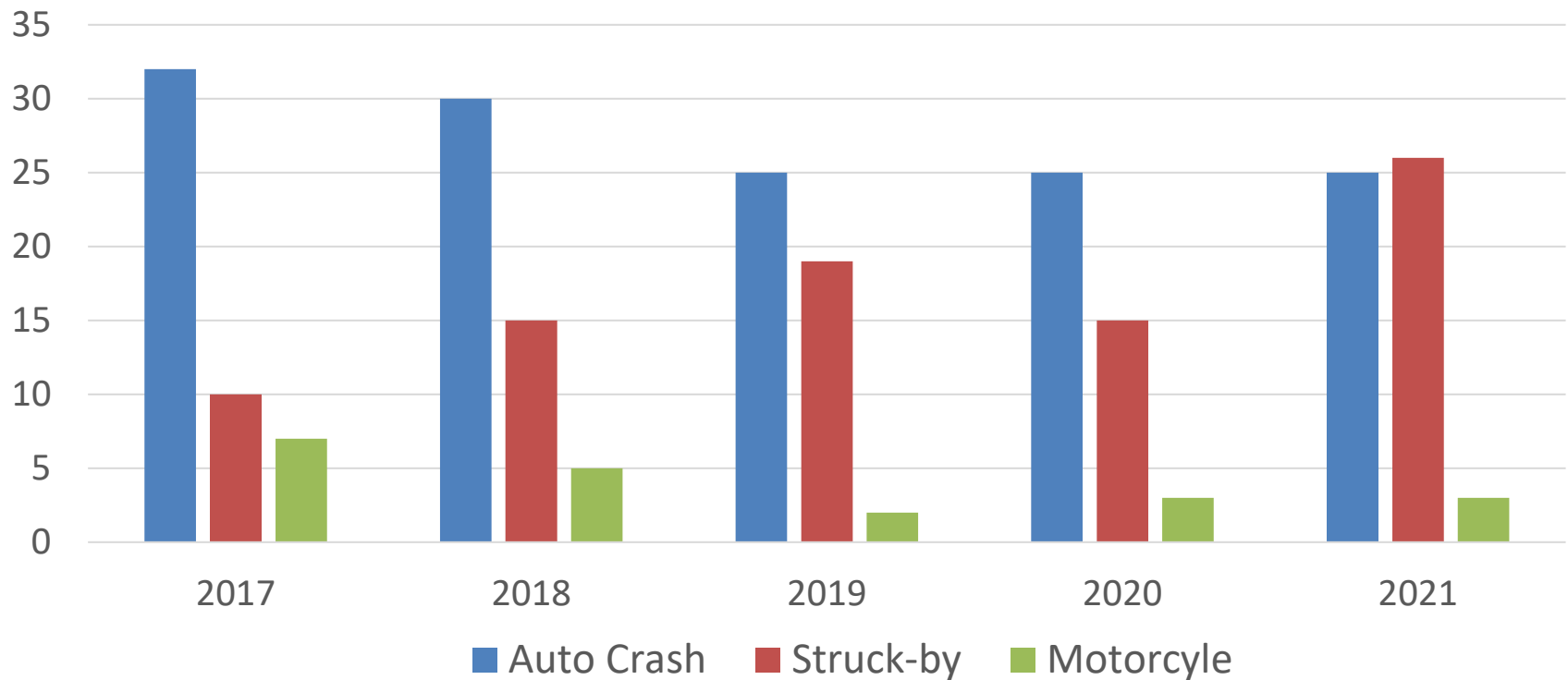
2017-2021





Breakout of Crash Types

Fatal Crashes 2017-2021



Data Points from Analysis

- 27% of the crashes involved an impaired driver
- 28% were deemed felonious (Criminal not accidental)
- 47% of officers were not wearing their seat belt





Single-vehicle Crashes

- Out of 137 vehicle crashes, **54** were single-vehicle crashes
 - 38% of all crashes were single-vehicle crashes
 - **52%** of those crashes occurred while responding to a call for service or backup





Struck-by Crashes

- Of the 87 officers killed by vehicles, 33% of them were on the scene of a previous crash
- 20% were conducting a traffic stop when struck
- 14 officers were killed while deploying tire deflation spikes

Motorcycle Crashes

- From 2017-2021, **20** officers were killed in motorcycle crashes
 - 6 of those officers were killed while conducting escorts for funerals, dignitaries or parades





Roadside Crashes 2017-2021

- Apart from the 87 Struck-by crashes, 8 officers died when their car was struck as they were stopped conducting police business.



Slow Down and Move Over

- **41 cases involved a violation of the “Slow Down and Move Over Law”**
 - **8 were parked patrol cars struck from the rear**
 - **33 were struck-by crashes of officers on foot**

“Stop Sticks”

- From 2017-2021, **14** officers were struck and killed while deploying tire deflation spikes



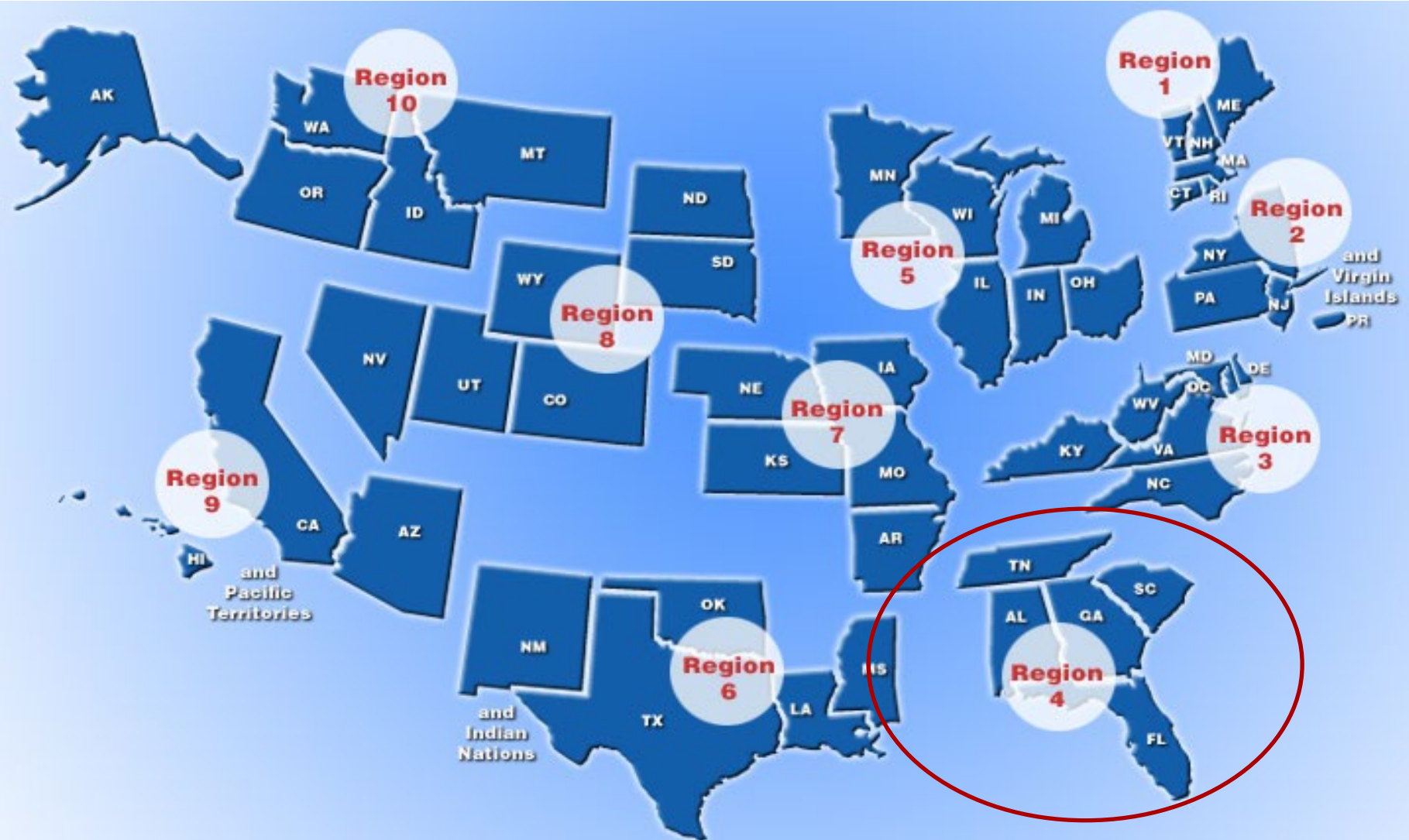
States with the highest LE fatality numbers

- Texas-23
- California-17
- Florida-17
- Georgia-14
- Arizona-12
- Illinois-11
- South Carolina-11
- Louisiana-10
- Mississippi-9
- Tennessee-9





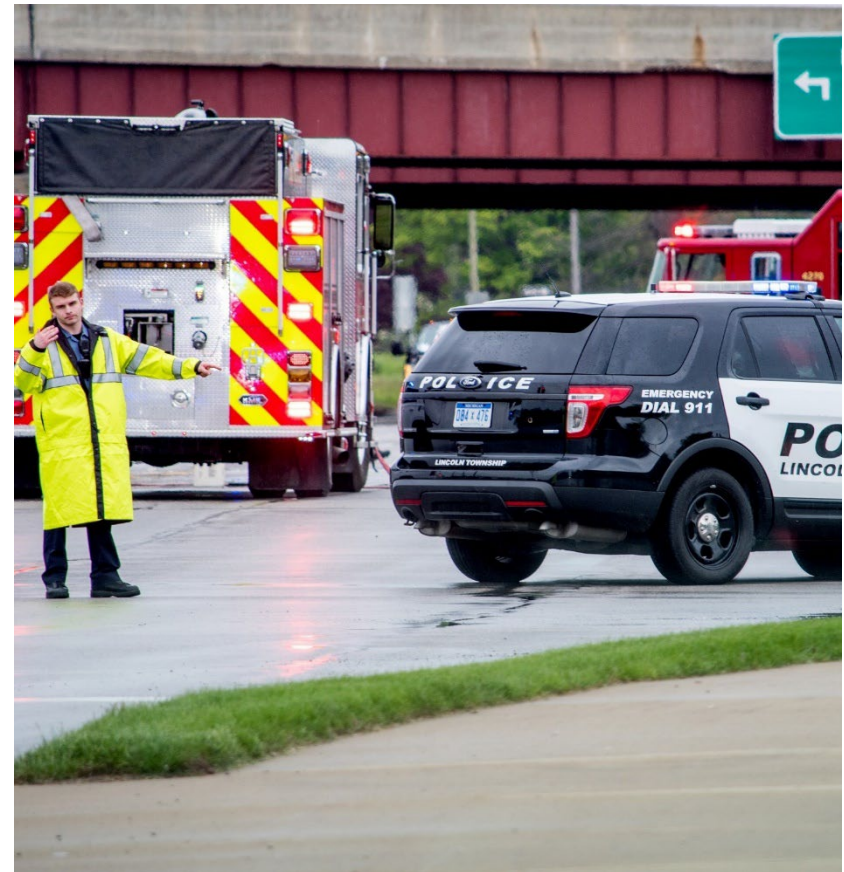
NHTSA Regions





Where we are in 2022

- **PRELIMINARY** Total traffic-related Cases=**34**
 - Auto Collision=16
 - Single-vehicle=6
 - Struck-by=10
 - Motorcycle=2
 - One involved deploying Tire a Deflation Device





Lowering Risk and Enhancing Safety

- Wear your Body Armor!
- Wear your Seat Belt!
- Wear your High Visibility-reflective vest!
- Tactically position your vehicle to protect you on stops or at crash scenes
- Conduct right-side (Passenger) approaches.
- Conspicuously mark your vehicles with reflective striping. Especially in the rear.
- Learn about TIMs, Traffic Incident Management



Which is more visible?





Which is more visible?

