



UTSouthwestern
Medical Center

RESPONDING TO THE ACTIVE SHOOTER:

A PERSONAL STORY

Alexander L. Eastman, MD, MPH, FACS, DABEMS
The University of Texas Southwestern Medical Center
The Rees-Jones Trauma Center at Parkland
Dallas Police Department

Disclosures



- **Financial:** None
- **Mindset:** Life-changing event
- **Other:** DHS and USMS

July 7, 2016



Peaceful BLM Protest

–800 Protesters

–100 Police



WFSA-TV
@wfsatvchannel8

Follow

Large crowd gathering at Belo Garden demanding change in wake of two deadly police shootings.

7:26 PM - 7 Jul 2016
16 39

3

UT Southwestern
Medical Center

July 7, 2016



4

UT Southwestern
Medical Center

DPD Communications

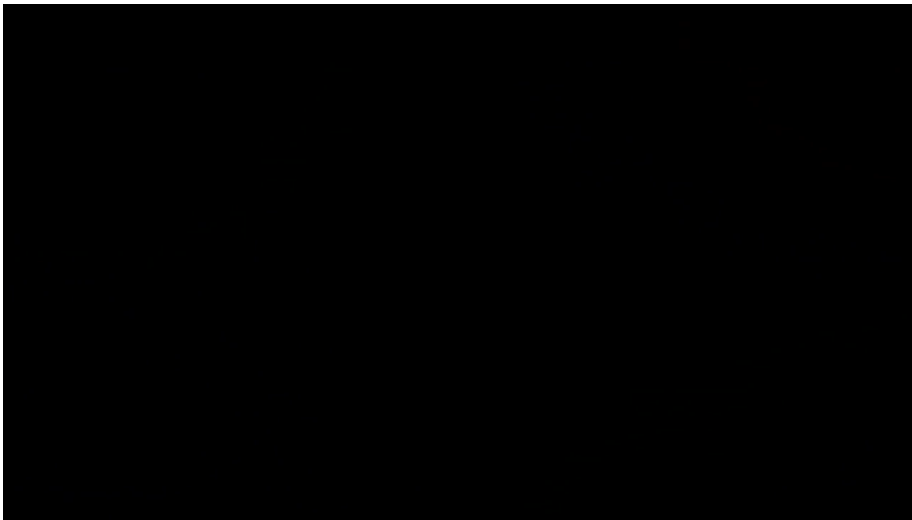


12 Officers shot 5 Killed

5

UT Southwestern
Medical Center

July 7, 2016



6

UT Southwestern
Medical Center

July 7, 2016



● Movements of Micah Johnson ● Foxtrot officer killed ● Officer killed

- 1 8:58 p.m.:** Johnson trains his rifle on officers in the intersection, fatally hits three Foxtrots, and injures three other officers and a witness.
- 2** Trying to shoot his way into an entrance of El Centro College, Johnson injures two officers. He then fatally shoots an officer on the street.
- 3 About 9:15 p.m.:** He turns onto Elm Street, shoots his way into an entrance of the college and proceeds to the second floor.
- 4** He fires on officers in front of a 7-Eleven. One is fatally shot.
- 5** After a four-hour standoff, a remote-controlled robot is sent in with an explosive charge that kills Johnson at **1:30 a.m.**

Sources: Staff reports, Dallas Morning News and Apple Maps

THE WASHINGTON POST

7

UTSouthwestern
Medical Center

July 7, 2016



8

UTSouthwestern
Medical Center

July 7, 2016



9

UT Southwestern
Medical Center

July 7, 2016 – Timeline



- 2058 – 2115
 - 6 LEOs / 1 civilian wounded

- 2115 – 2135
 - 6 additional LEOs wounded

- 0135
 - Active phase concludes

10

UT Southwestern
Medical Center

July 7, 2016



- 15:54 MVC
- 19:40 MCC
- 19:59 MVC
- 20:21 Burn
- **21:10 GSW**
- **21:16 GSW**
- **21:16 GSW**
- **21:21 GSW**
- 21:20 Burn
- **21:26 GSW**
- **21:54 GSW**
- 22:21 MCC
- 23:02 MVC
- **00:21 GSW**
- 01:20 MVC
- 01:20 MVC
- 01:23 MVC
- 05:17 Fall
- 19:00 ED Volume: 226
- 46 Admit Holds Waiting

11

UTSouthwestern
Medical Center

Micah Xavier

Johnson 25

**Born in Mississippi
and moved to
Mesquite, Tx.**



*Jr. ROTC
U.S Army Reserve
Unit from March '09
til April '15*



*Deployed to
Afghanistan—
one year in total

?? Training ??*

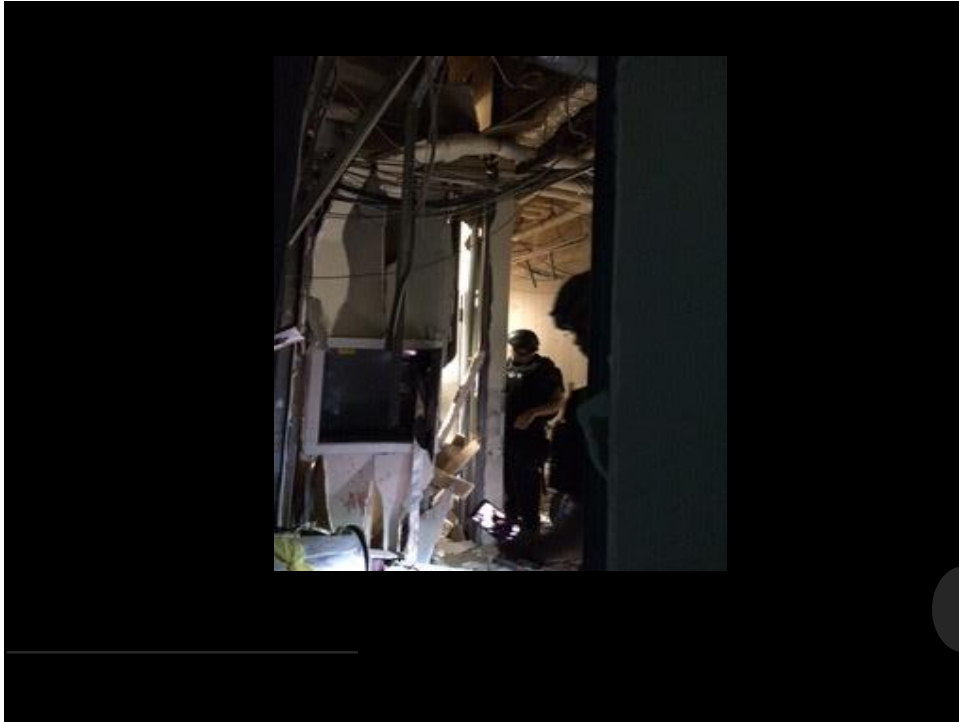


CNT Position









Lesson#1 – Situational Awareness



- Initial notification and response
- Fog of War
- 6 mins
- NTPs
- "Warm Zone" Clearing / RTF
- Do not wait for situational awareness—you won't have it.

Optimal Casualty Care Model?

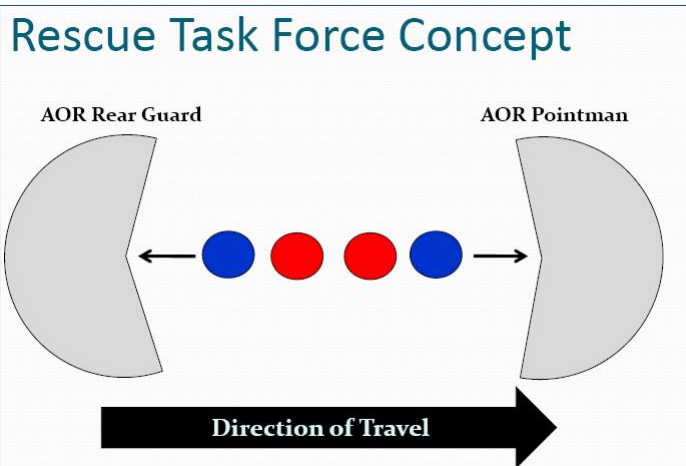


- Directed at Fire/Rescue/EMS partners
- Rescue Task Forces?
- To be determined concept

23

UT Southwestern
Medical Center

Rescue Task Force



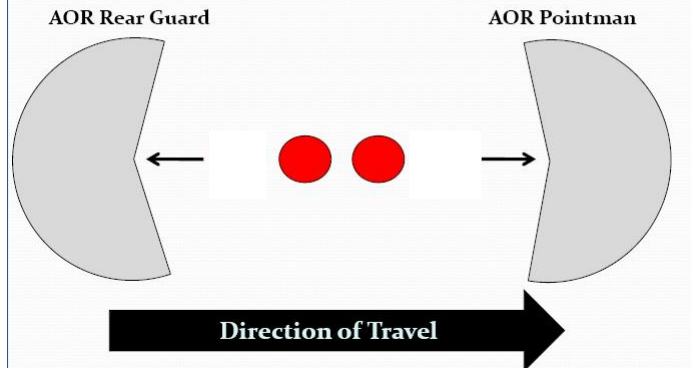
24

UT Southwestern
Medical Center

Rescue Task Force



Rescue Task Force Concept



25

UTSouthwestern
Medical Center

RTF Limitations (Updated)



- Wont survive first contact
- Orlando, Dallas, Paris
 - Rapidly evolving
 - No clear “warm” zone
- Utility of ALS in penetrating trauma
- Still elucidating optimal model

26

UTSouthwestern
Medical Center

Lesson#1 – Situational Awareness



27

UT Southwestern
Medical Center

Lesson#1 – Situational Awareness



28

UT Southwestern
Medical Center

Stop The Bleed



29

UTSouthwestern
Medical Center

BCON



STOP THE BLEED™ SAVE A LIFE

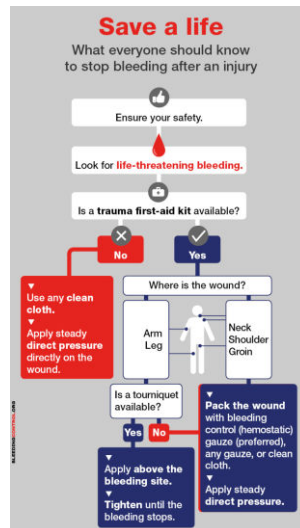
1 APPLY PRESSURE WITH HANDS

2 APPLY DRESSING AND PRESS

3 APPLY TOURNIQUET

WRAP WIND SECURE TIME

CALL 911



30

UTSouthwestern
Medical Center



SAVE A LIFE: STOP THE BLEEDING

What Everyone Should Know to Control Bleeding



Bleeding Control for the Injured - Vers. 2.2 Basic

American College
of Surgeons

The **Committee**
on **Trauma**



Primary Principles: ABCs of Bleeding

B – Bleeding (continued)

– What is “life-threatening” bleeding?



Blood spurting out of a wound
(wound of artery can lead to death in minutes)

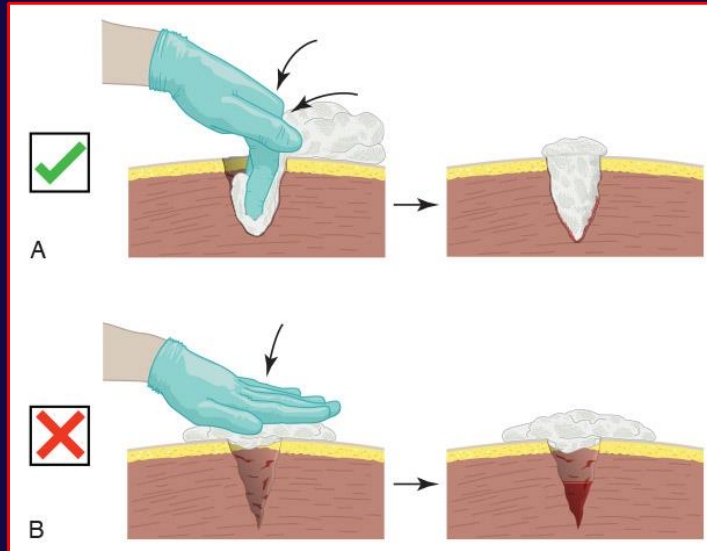


Courtesy of Norman McSwain, MD, FACS, NREMT-P.

Blood soaking the sheet or
clothing



Wound Packing (3 of 5)

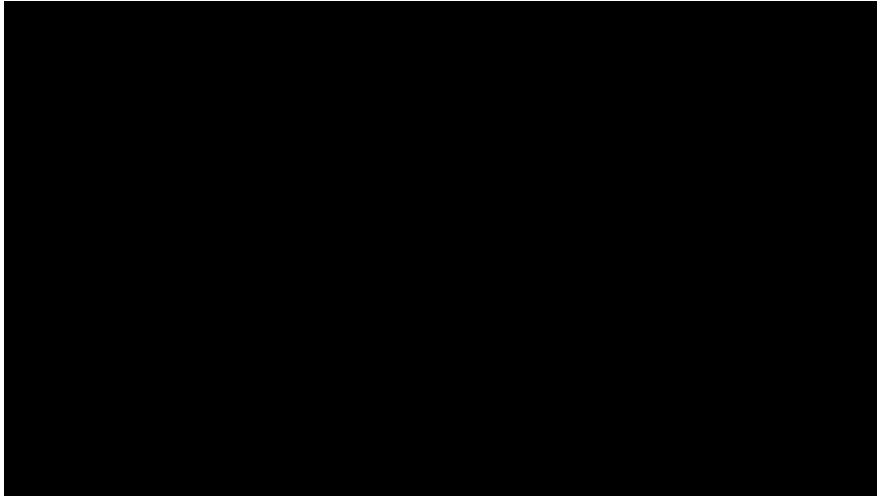


Bleeding Control BASIC



- Standardized training program
- Easily delivered
- Outstanding trauma center outreach
- Certified Instructors
- www.bleedingcontrol.org

Stop The Bleed



35

UT Southwestern
Medical Center

"Recovery" Phase...



DALLAS
1:51 PM

»» BREAKING NEWS
TRAUMA SURGEON: "WE'RE ALL HURTING"

DR. ALEXANDER EASTMAN | PARKLAND MEMORIAL HOSPITAL, MEDICAL DIRECTOR

LIVE
MSNBC 20 YEARS

JR "ELECTION CONFESSION," LOG ON TO ELECTIONCONFESSIONS.COM AND **DOW 105.57**

36

UT Southwestern
Medical Center

Recovery Hurts...



37

UTSouthwestern
Medical Center

Lesson #4—Caring for Each Other



- **Taboo subject**
- **We simply don't discuss ourselves**

38

UTSouthwestern
Medical Center

Lasting effects...

Psychological vs. Medical "Footprint"

In a disaster, the size of the **psychological "footprint"** greatly exceeds the size of the **medical "footprint."**



All Rights Reserved 2006 DEEP Center
Leonard M. Miller School of Medicine
University of Miami

Source: Shultz, J.M., et al., Behavioral Health Awareness Training
for Terrorism and Disasters, Miami FL, DEEP Center, 2003

PFA

SAFETY

SAFEGUARD

Goal: SAFEGUARD survivors from harm and offer protection.

SUSTAIN

Goal: SUSTAIN survivors by providing basic needs.

FUNCTION

COMFORT

Goal: COMFORT support, validate, and orient distressed survivors.

CONNECT

Goal: CONNECT survivors to family, friends, and social supports,

ACTION

EDUCATE

Goal: EDUCATE and inform survivors about the disaster, available options for action, and resources for support.

EMPOWER

Goal: EMPOWER survivors to take first steps toward disaster recovery and foster self-efficacy and resilience.

The Recovery Phase



41

UTSouthwestern
Medical Center

Contact Information



Alexander L. Eastman, MD, MPH, FACS
Medical Director and Chief, The Rees-Jones Trauma Center at Parkland
Lieutenant and Chief Medical Officer, Dallas Police Department
alex.eastman@dpd.ci.dallas.tx.us
214-648-0299

42

UTSouthwestern
Medical Center